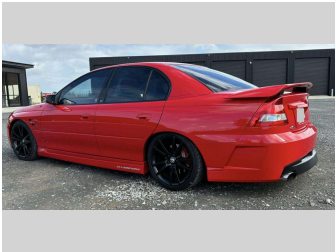
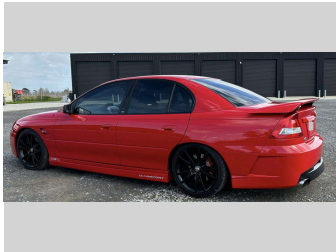
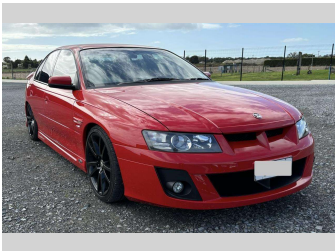


# 2005 Holden Commodore HSV Clubsport R8



Purchase Price

**\$39,990**

Includes GST, Registration & Licensing

Finance may be available on this vehicle. Ask one of our friendly staff for more information.

Gain peace of mind with Mechanical Breakdown Insurance. **Ask us how.**



Top features

- » Air Conditioning
- » Airbag(s)
- » Alloy Wheels
- » Body Kit (Factory)
- » Electric Mirrors (Retractable)
- » Face Lift Model

Body Style

**4 door, Saloon**

Odometer

**183,589 km**

Engine

**6000 cc, Internal Combustion**

Fuel Type

**Petrol**

Transmission

**4-Speed Auto**

Wheels

**19", Factory Alloys**

VIN

**6G1ZK54U55L425839**

Interior

**Black, Leather**

Safety



Based on 2024 UCSR rating for 97-02 models

Reg No.

**JCJ6**

Ext Colour

**Red**

History

**NZ New**

Seats

**5 seats, Leather**

CO2 Emissions

☆☆☆☆☆☆

**356 grams/km**

Energy Economy

☆☆☆☆☆☆

**Annual fuel cost of \$5,800  
14.8L per 100km**

Cost per year is an estimate based on petrol price of \$2.80 per litre and an average distance of 14000 km. Emissions and Energy Economy figures standardised to 3P WLTP.

**Stock ID: 8066**



Brent Wiley Wholesale | Phone 07 3078533 | Email [brentwiley@xtra.co.nz](mailto:brentwiley@xtra.co.nz)  
1 Gateway Drive, Whakatane 3194, New Zealand